

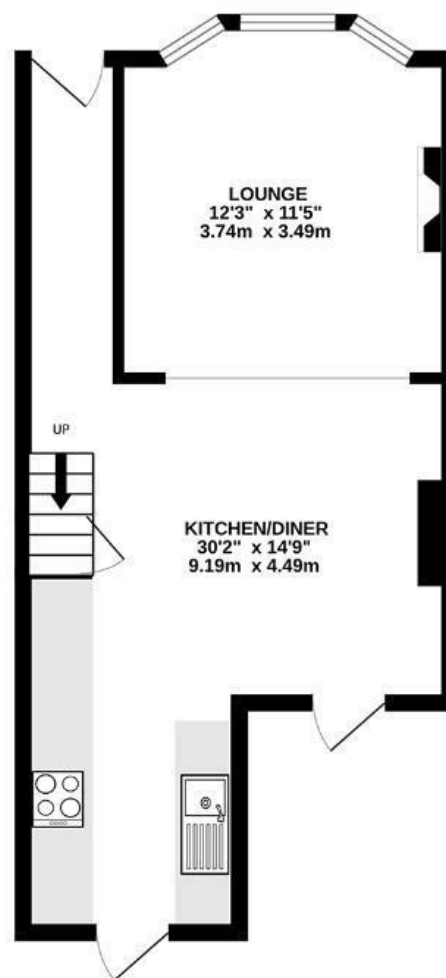
# Carlyle Road

## EASTON

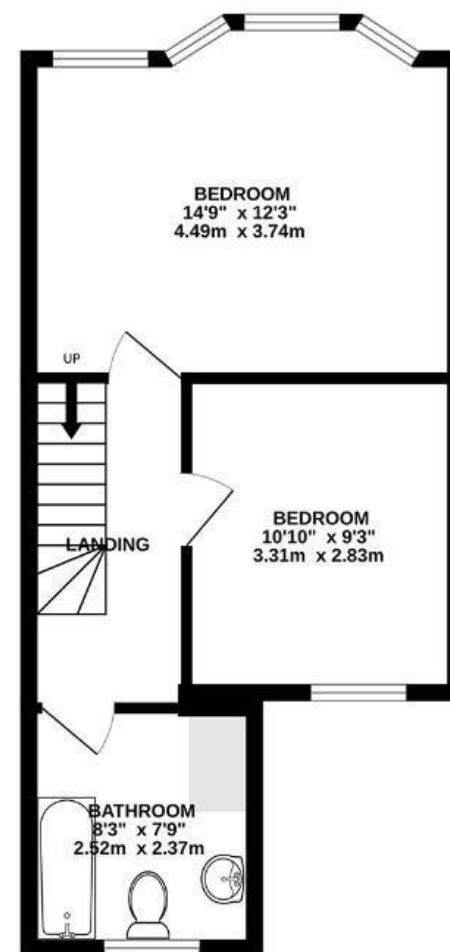
APPROXIMATE FLOOR AREA  
73.1 SQM / 787 SQFT



GROUND FLOOR



FIRST FLOOR



W  
C  
+  
P.C.

Illustrations are for reference purposes only, measurements are approximate, not to scale.

**Boardwalk**

# Carlyle Road

GREENBANK, BRISTOL



£400,000



2 Bedrooms



BS5 6HG



1 Bathrooms

*"Having owned this investment property for many years it has been really enjoyable to renovate and give the property a new lease of life. We hope it will make a wonderful happy home for it's new owners."*

